

UNL JAZZ AUDITIONS FALL 2014
INFORMATION SHEET
DR. ERIC RICHARDS

Monday, August 26th, 6:00pm-9:00pm, WMB 119:
Saxophone, Violin, Viola, Cello

Tuesday, August 27th, 6:00pm-9:00pm., WMB 119:
Trumpet, Horn, Tenor Trombone, Bass Trombone

Wednesday, August 28th, 6:00pm-9:00pm, WMB 119:
Piano, Guitar, Bass, Drums, Vibes, Vocalists

AUDITION DETAILS AND DOWNLOADS

Download the appropriate audition packet for your instrument from the UNL Jazz Studies website.

IMPROVISATION

Improvisation as part of the audition is highly encouraged, but not mandatory for section positions. **Improvisation at the audition IS mandatory if auditioning for the following Jazz Soloist positions:**

- Alto Saxophone 1
 - Tenor Saxophone 1
 - Trumpet (Jazz chair)
 - Trombone (Jazz chair)
 - Guitar
 - Piano
 - Bass
- Be prepared to sight-read professional level jazz ensemble repertoire.
 - Sign up for a time on the Jazz Audition Roster on UNL Jazz Studies bulletin board between WMB 205 - 206 (between Dr. Haar and Dr. Richards' offices). This roster will be available beginning Monday, 18 August 2014
 - Complete the UNL Jazz Audition form prior to the audition.
Bring your completed UNL Jazz Audition form to the audition.

DRUMMERS: Prepare examples of the following grooves:

- Medium swing (quarter note = 120) with sticks and brushes
- Up-tempo swing (quarter note = 240) with sticks and brushes
- Ballad with brushes (quarter note = 72)
- Bossa (sticks and brushes)
- Samba (sticks and brushes)
- Afro-Cuban/Abakua
- Straight 16ths Funk
- Swing 16ths Funk
- Contemporary straight 8ths ("ECM")

VOCALISTS: Prepare 1-2 jazz selections and bring lead sheets to the audition. Be prepared to scat on *BILLIE'S BOUNCE* and *YOU'D BE SO NICE TO COME HOME TO*.

FIRST Rehearsals of all UNL Jazz Ensembles begin the week of Tuesday, 2 September 14.

AUDITION MATERIALS

1. SCALES

- Bebop Scale in 6 keys of your choice (3 flat keys, 3 sharp keys)
- Dorian Minor Scale in 6 keys of your choice (3 flat keys, 3 sharp keys)
- Diminished Scale (Half Step/Whole Step) on Bb, B, and C.
- See the included Scale Syllabus for specific scale content.

Focus: Basic Jazz Vocabulary

2. BILLIE'S BOUNCE

- Improvisation optional except for the Jazz Soloist Positions noted above.
- Guitarists, Pianists, Bassists, and Vibists should also be prepared to comp or walk (bass) on these chord changes.
- Drummers should be able to play one chorus of the "melody" on drum set, then play time, and solo.

Focus: Swing phrasing and articulation, "time".

3. YOU'D BE SO NICE TO COME HOME TO

- Improvisation optional except for the Jazz Soloist Positions noted above.
- Guitarists, Pianists, Bassists, and Vibists should also be prepared to comp or play time (bass) on these chord changes.

Focus: Phrasing, tone, intonation, vibrato, "time".

4. EAST RHYTHM

- Improvisation optional except for the Jazz Soloist Positions noted above.
- Guitarists, Pianists, Bassists, Drummers, and Vibists should also be prepared to comp or play time (bass) @ **(101)**.

Focus: Preparation, attention to detail.

UNL JAZZ AUDITION Candidate Form

Please fill out LEGIBLY and completely.

NAME		INSTRUMENT		
Course of Study & Year (e.g. "BM3")		E-mail & Cell Phone # (remember...write legibly ☺) E-mail:		
		Cell Phone #:		
Briefly describe your jazz playing experience. Why are you auditioning for a UNL Jazz Ensemble?			Are you interested in being placed in a combo?	
Please list your Fall 2014 class and work schedule.				
Monday	Tuesday	Wednesday	Thursday	Friday

Ensemble Rehearsal Times

UNL Jazz Orchestra: M – W 3.30p – 5.00p

UNL Big Band: T – Th 1.30p – 3.00p

UNL Jazz Combos Rehearsal times to be arranged and announced.

N.B., All Violin, Viola, and Cello performers are expected to perform in the UNL Symphony Orchestra in addition to the Jazz Orchestra and/or Combos.

Do you have any known conflicts with the Jazz Orchestra or Big Band rehearsal times?

Is there any other relevant information you would like the Jazz Audition Committee to know?

C Lead

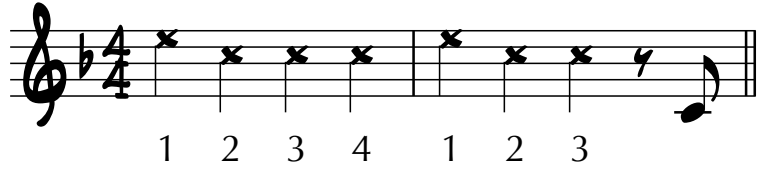
BILLIE'S BOUNCE

Charlie Parker

(UNL Jazz Auditions 2014)

Bright Swing Feel: ♩ = 160

COUNTOFF



HEAD

F7 B \flat 7 B \circ 7 F7 B7(#9)

B \flat 7 F7 Gmi7 Ami7 D7(b9)

Gmi Gm(maj7) Gmi7/C C¹³ F7 Gmi7 C¹³

IMPROVISATION

F7 B \flat 7 B \circ 7 F7 B9(b5)

B \flat 7 F7 Gmi7 Ami7 D7(b9)

Gmi Gm(maj7) Gmi7/C C¹³ F7 Gmi7 C¹³

东韵

(East Rhythm)

*Commissioned for the **Shanghai Conservatory of Music Jazz Ensemble, Zhang Xiaolu** - director
by **Dr. Gene Aitken**, May 2014*

Shuffle Funk (Swing 8ths/HALFtime feel): ♩ = 96

SOLO Fill!

SOLO Fill!

H.H./Snare

Kick

mf *ff* *f* *p*

5

f *mf* *ff* *f*

10

SHUFFLE FUNK groove (HALFTIME feel)

15

21

silence

f

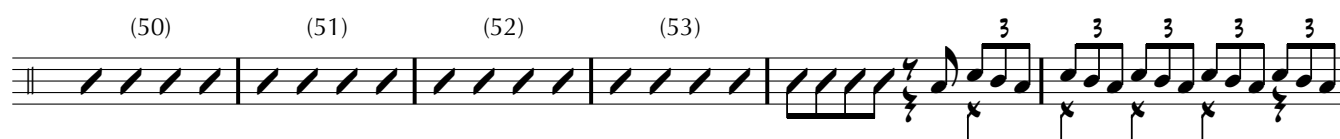
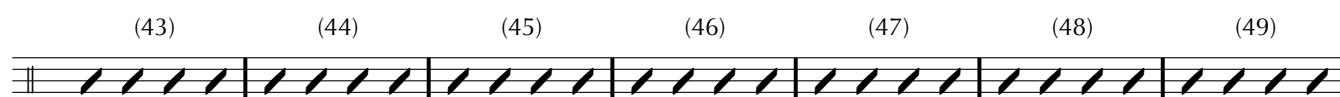
25

mf

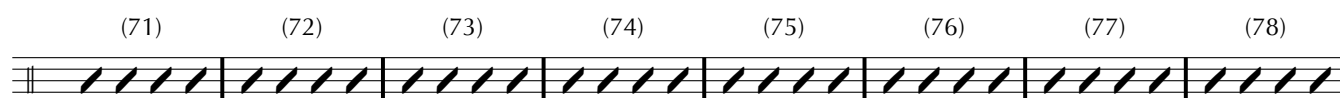
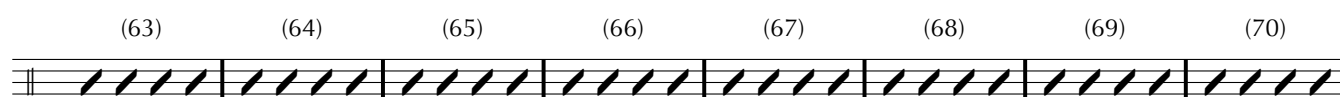
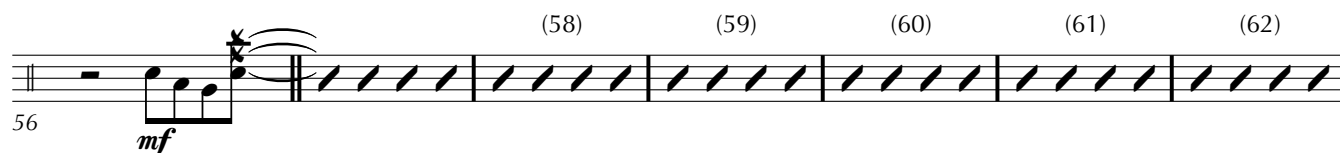
SHUFFLE FUNK groove (HALFTIME feel)

(29) (30) (31) (32) (33) (34) (35) (36)

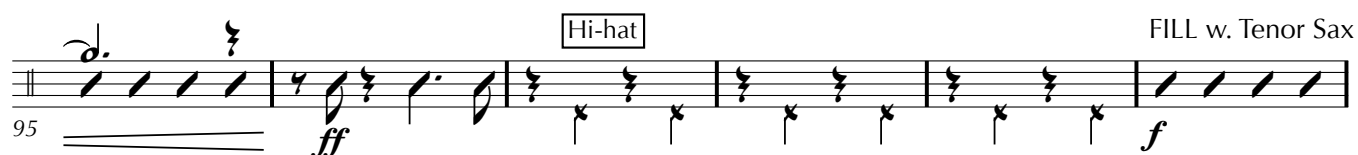
(37) (38) 41



57 SHUFFLE FUNK groove (HALFTIME feel)



90



101: OPEN for SOLOS; Backgrounds ON CUE

101

(107) (108) (109) (110) (111) (112) (113) (114)

117

115

Backgrounds

121

(127) (128) (129) (130)

133: ONward (on CUE)!

133

138 *Light and groovin'!*

Brass

mf

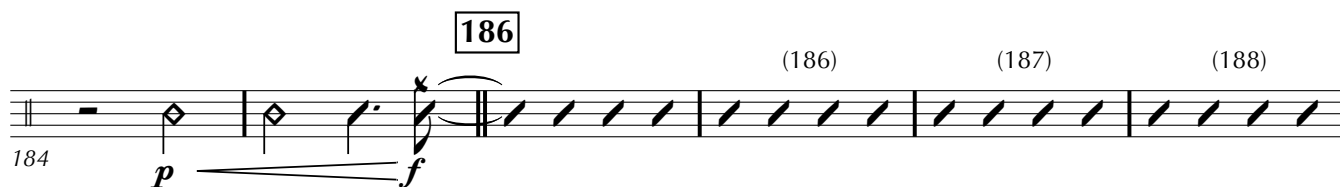
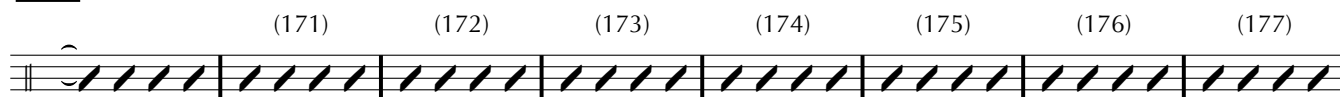
144

154

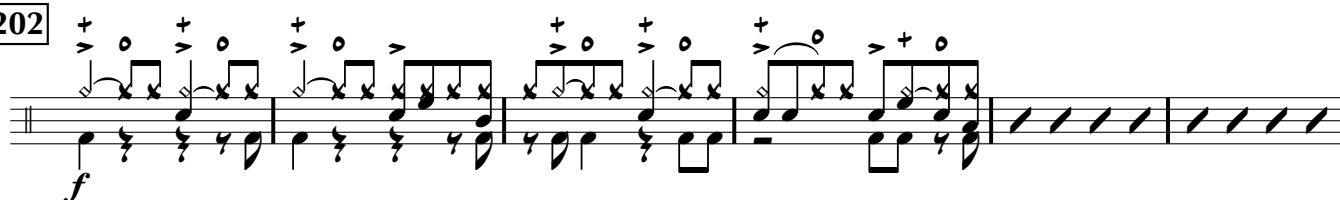
150



170 DRIVING FUNK groove!



202



214

FILL

220

SOLO Fill!

p *ff* *f* *p*

226

SOLO Fill (continues).....

FILL

f *p* *f* *p* *f*

230

FILL

p *f* *f* *mf* *ff* *f*

235

mf *ff*

Erin Richards

28 Apr 14
S.D.G.